



Meadow Ridge Apartments & Townhomes

Features

- New construction, 2004
- Location! Greenville's growing west side
- Greenville Public Schools
- Private, front entrance
- Private, detached garage w/remote control (Apartments)
- Private, attached garage w/remote control (Townhomes)
- Hardwood cabinetry
- Frost free refrigerator
- Electric range/oven
- Dishwasher
- Microwave
- Food disposal
- Laundry closet w/full-size electric washing machine and dryer
- Window treatments / plush carpeting
- Living room patio/deck
- Energy efficient gas heat and central air-conditioning
- Barrier free apartment available



Hathaway Properties

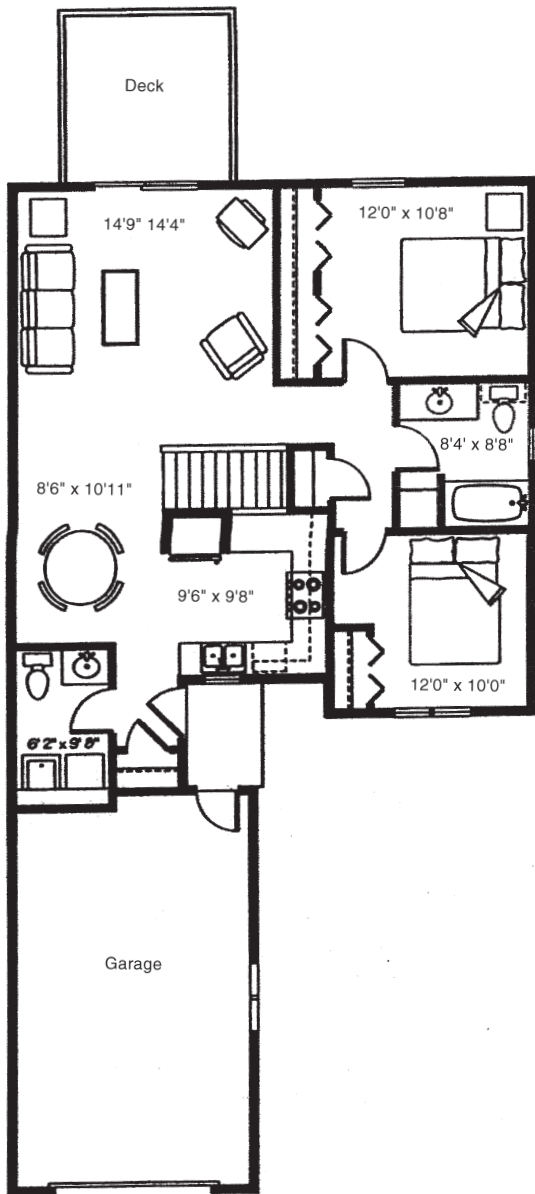
Developing Greenville's Newest Neighborhoods

820 S. Greenville West Drive, Greenville MI 48838
(616) 754-6130
www.hathawayproperties.com

Townhomes

THREE BEDROOM, TWO BATH PLUS
1600 Square Feet

Upper Main Floor



Lower Level

