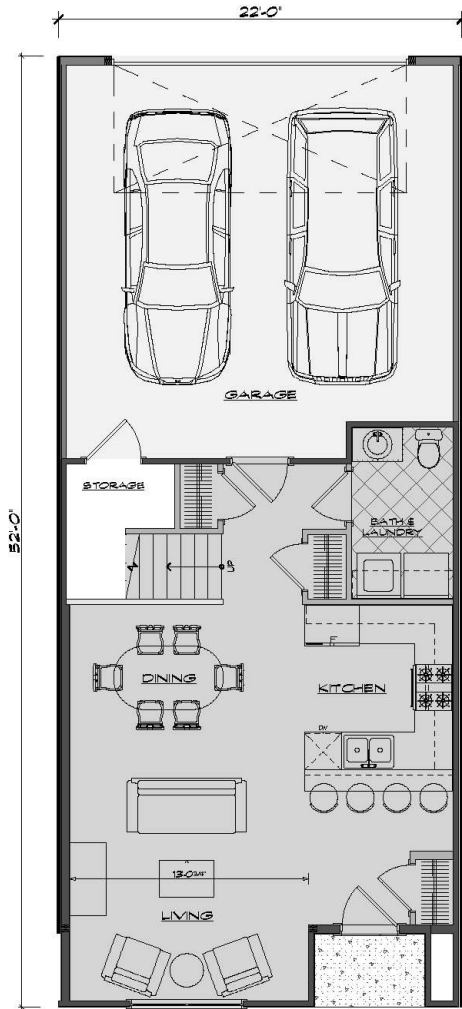


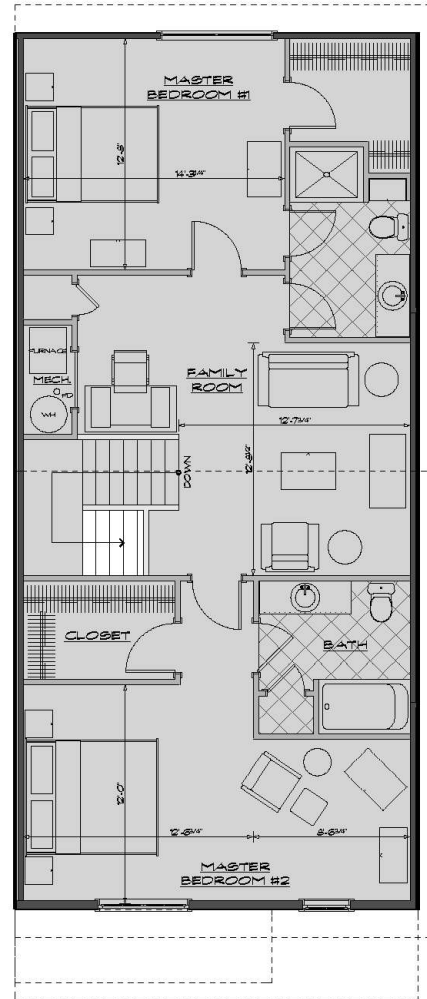
# HAWTHORNE TOWNHOME CONDOMINIUMS



TRAIL BEND 594 sq ft

ML @ 594 + UL @ 1,030 = 1,624 sf  
2 BEDROOMS, 2 1/2 BATHS

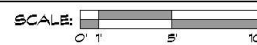
## MAIN LEVEL FLOOR PLAN



TRAIL BEND 1,030 sq ft

ML @ 594 + UL @ 1,030 = 1,624 sf  
2 BEDROOMS, 2 1/2 BATHS

## UPPER LEVEL FLOOR PLAN



The builder reserves the right to change any information herein without notice. All floor plans are approximate and may change. Renderings are an artist conception and may vary in construction.



**Hathaway Properties**

# HAWTHORNE TOWNHOME CONDOMINIUMS

1900 - 1910 Meijer Drive (Six Units) Greenville, MI 48838

## Interior Features\*

Six varying open floor plans  
 9' main floor ceilings  
 Creative use of upper floors  
 Thoughtful kitchen design  
 Kitchen appliance allowance  
 High quality cabinetry  
 Exhaust fans for each bathroom  
 Ice maker line for refrigerator  
 Kitchen garbage disposal  
 Master bedroom/bath/walk-in closet  
 Master bedroom ceiling fan  
 Vanity mirrors for each bathroom  
 Cultured marble vanity tops and sinks  
 Wire closet shelving  
 First floor laundry  
 Central air-conditioning  
 Four phone jacks  
 Four cable jacks  
 Door chime  
 Smoke detectors  
 Recessed lighting  
 Four panel interior doors  
 Forty gallon hot water heater  
 80% gas efficient furnace  
 100 amp electrical service

## Exterior Features

Designed by Visbeen Associates, Inc.  
 Six varying exterior designs  
 Private front entrances with sidewalks  
 Mailbox  
 Attached two-stall garage with opener  
 Steel roll-up garage door with rubber sweep  
 Garage fully dry walled  
 Ground fault duplex outlet in garage  
 Waterproof electric outlet - front and rear  
 Paved rear-access driveway  
 Vinyl siding  
 Stone chimneys (3 units)  
 Andersen windows and screens  
 Patio door with screen (2 units)  
 Poured cement patio (2 units)  
 Lush landscape with irrigation  
 Decorative exterior light fixtures

\*Customized professional interior design packages for lighting, carpet, flooring, paint color, and cabinets.

The builder reserves the right to change any information herein without notice. All floor plans are approximate and may change. Renderings are an artist conception and may vary in construction.



**Hathaway Properties**